



# Annual General Meeting

*24 May 2018*





**Lulo...continuing to produce  
world class diamonds**



**...and from  
new blocks**







Orange eclogitic garnet in core from kimberlite L104 @ 59.8m (drilling in progress)



Phlogopite in possible mantle xenolith in core from kimberlite L104 @ 48.4m



...drilling continues...all year around



## Angola...foreign direct investment drive...reviewing policy

- Ownership
- Marketing
- Licences
- Repatriation

“Canada and Angola arguably remain the two most prospective jurisdictions for grassroots diamond exploration.” *Paul Zimnisky, Diamond Analyst*

“Recent political changes in Angola and Zimbabwe have led to optimism of a more transparent and investible diamond industry in the two nations”. *Paul Zimnisky, Diamond Analyst*





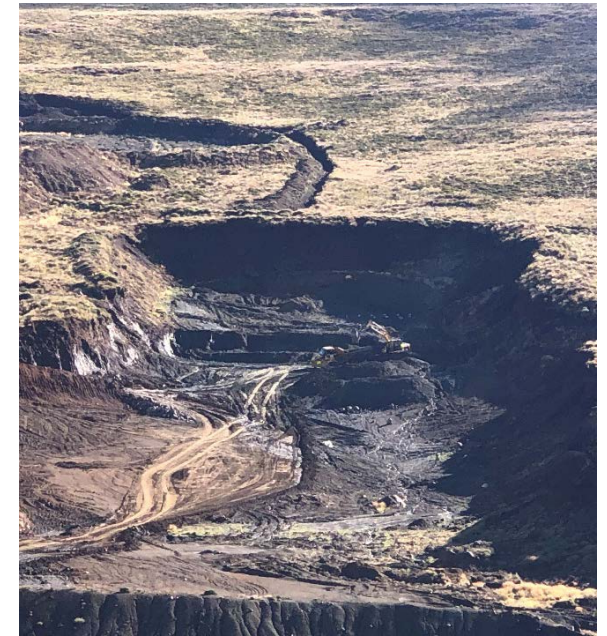
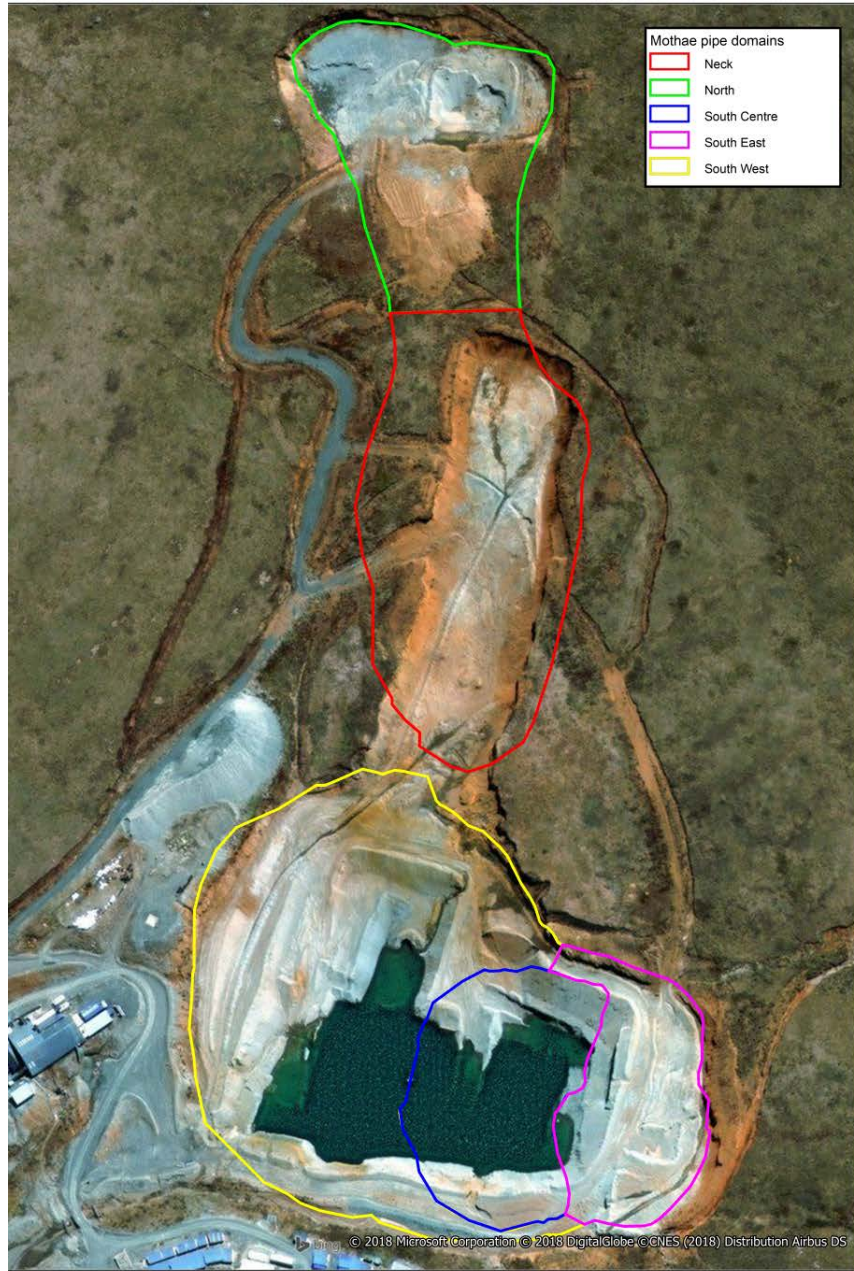
**Mothae...New 150tph  
commercial plant  
construction on  
schedule**



**Mothae...large and gem quality  
diamonds from commissioning bulk  
sampling plant**



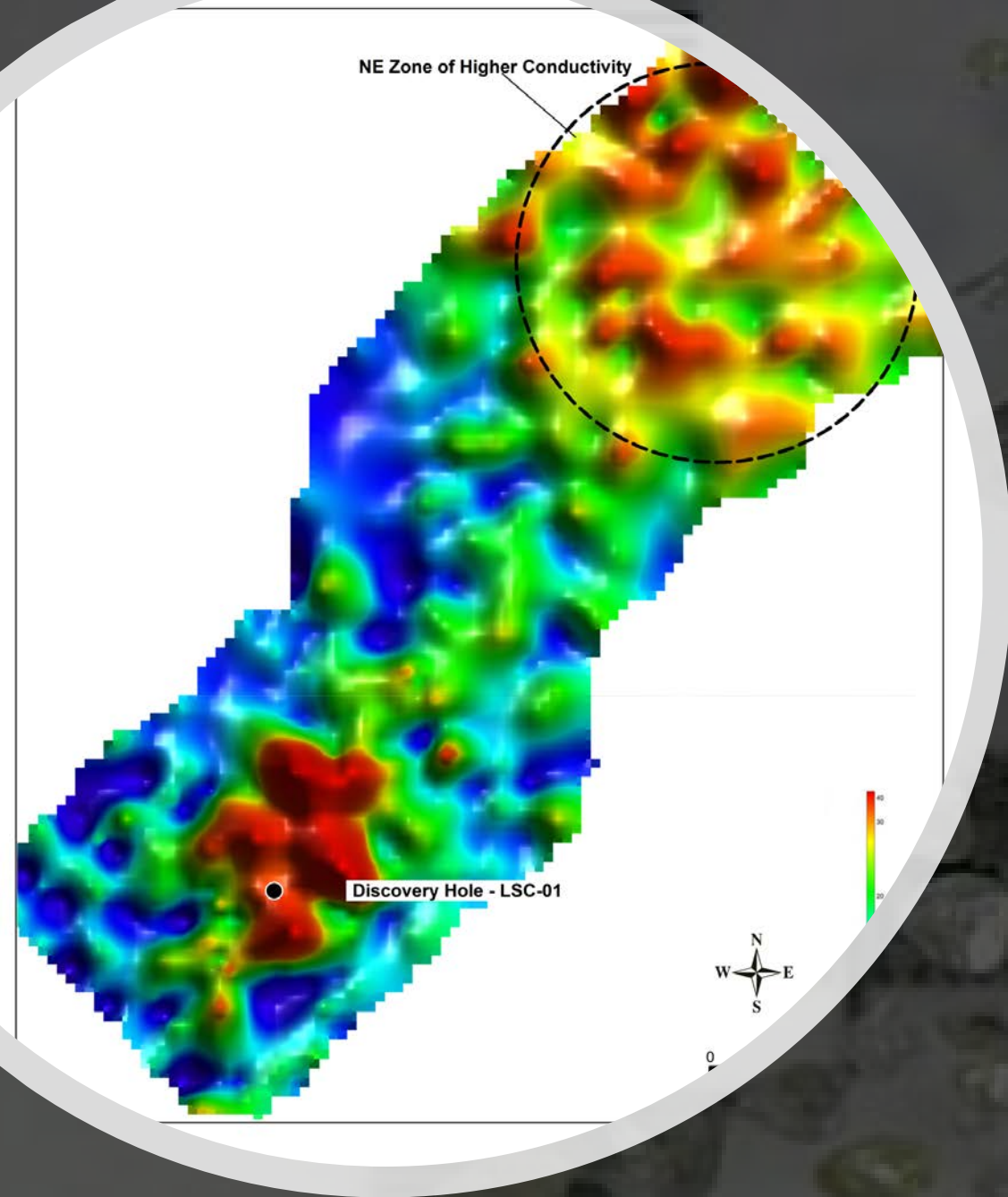




**...from the Neck Zone...being  
sampled with a view to adding to  
+1m carat resource**

---

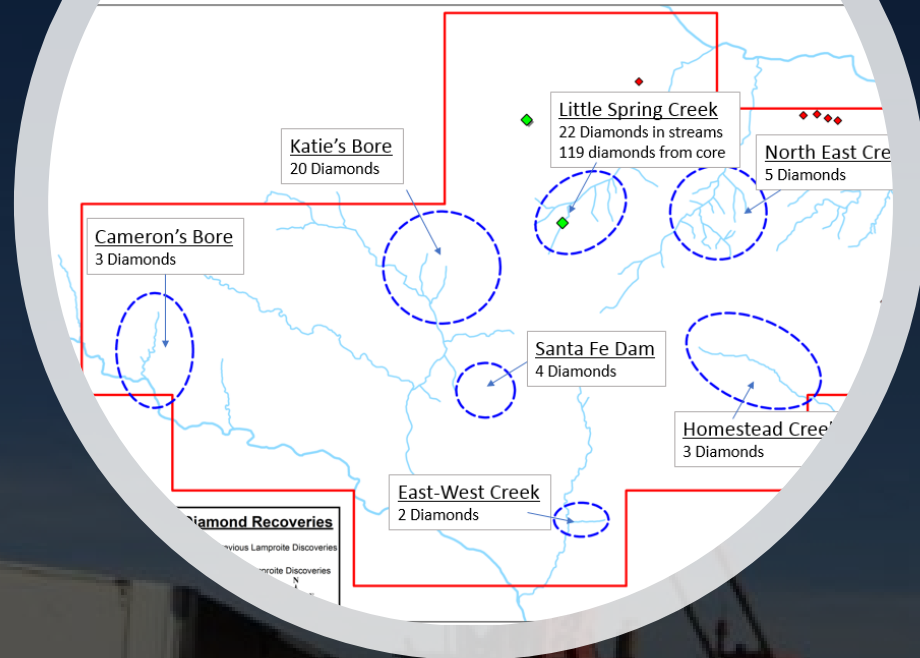




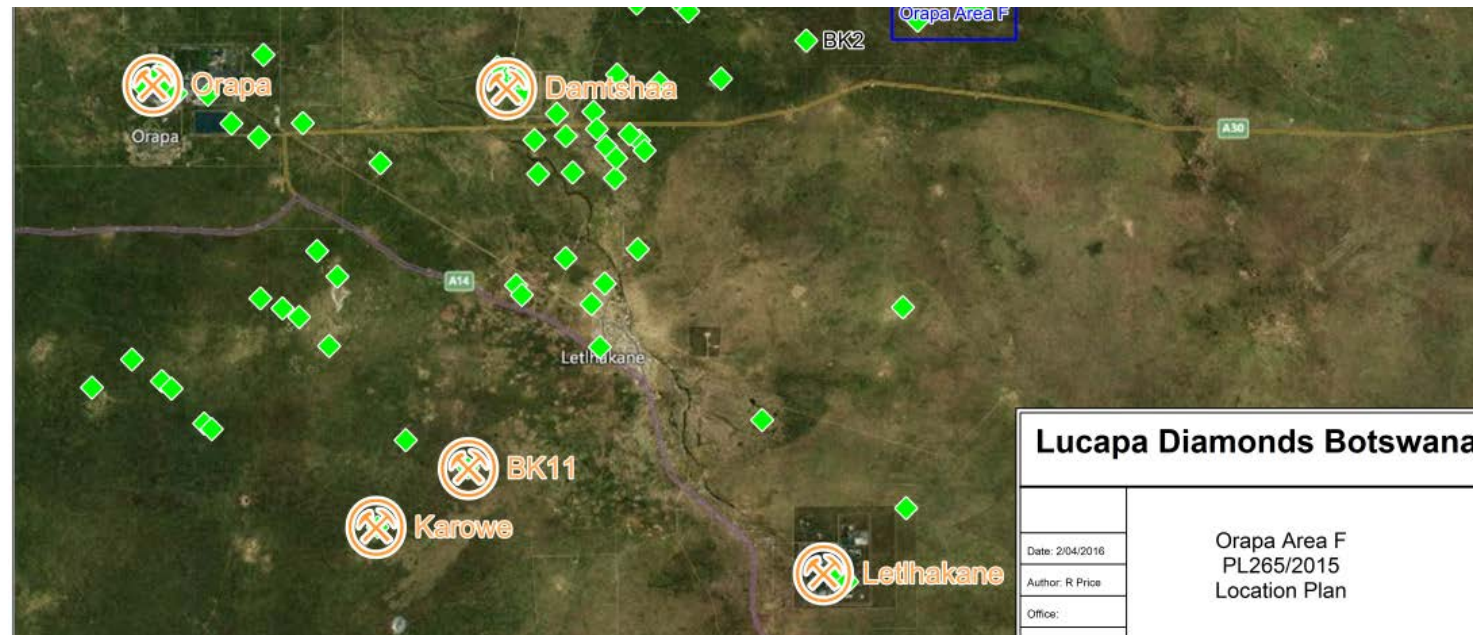
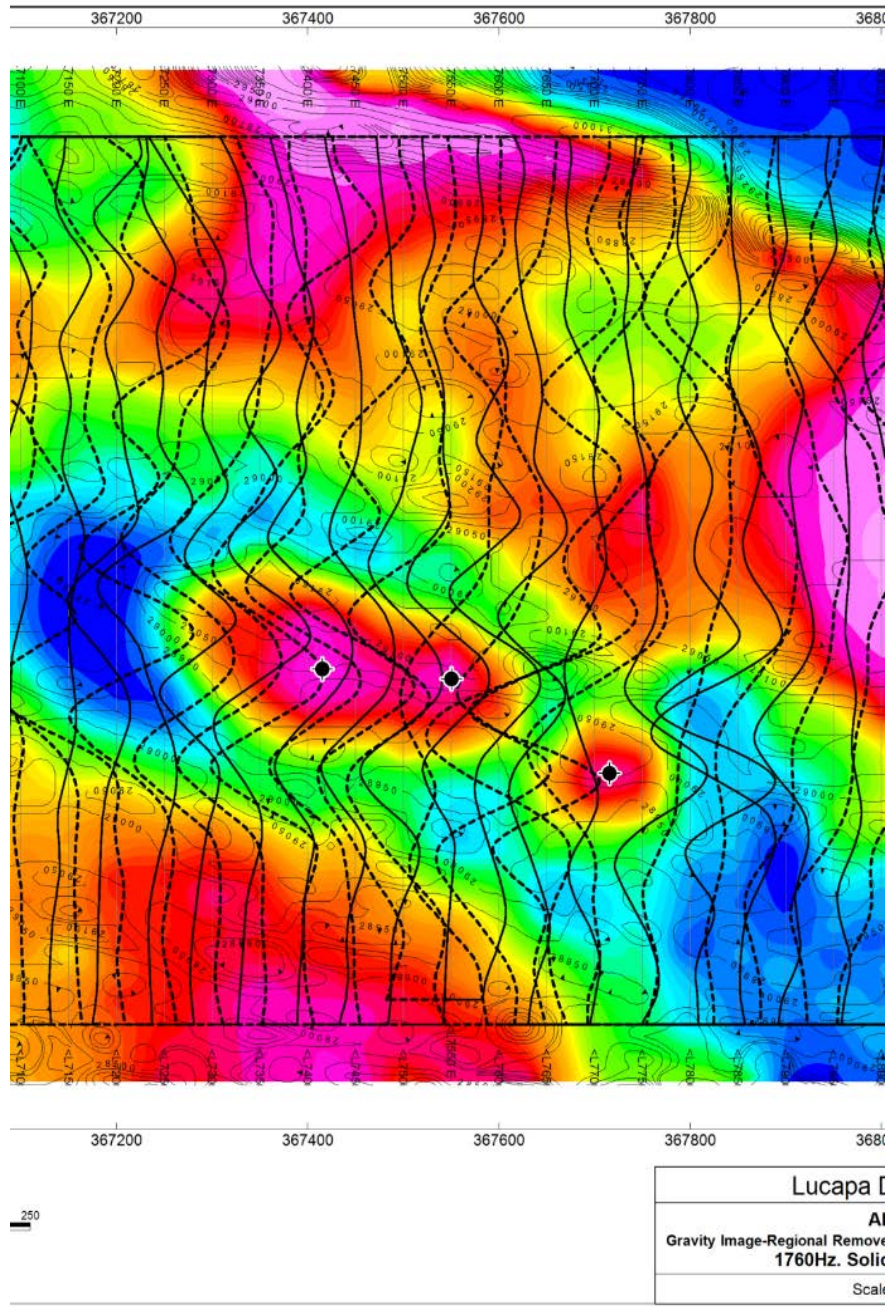
**Brooking...following  
up on an exciting  
diamond discovery**



**Brooking...locating additional  
priority drilling targets**







**Botswana...EMP finalized and to be lodged...planning to drill in late 2018**



# Forward-Looking & Competent Person's Statements

## Forward-Looking Statements

This Presentation has been prepared by Lucapa Diamond Company Limited ("the Company"). This document contains background information about Lucapa Diamond Company Limited current at the date of this Presentation. The Presentation is in summary form and does not purport to be all inclusive or complete. Recipients should conduct their own investigations and perform their own analysis in order to satisfy themselves as to the accuracy and completeness of the information, statements and opinions contained in this Presentation. This Presentation is for information purposes only. Neither this Presentation nor the information contained in it constitutes an offer, invitation, solicitation or recommendation in relation to the purchase or sale of shares in any jurisdiction. This Presentation may not be distributed in any jurisdiction except in accordance with the legal requirements applicable in such jurisdiction. Recipients should inform themselves of the restrictions that apply in their own jurisdiction. A failure to do so may result in a violation of securities laws in such jurisdiction. This Presentation does not constitute investment advice and has been prepared without taking into account the recipient's investment objectives, financial circumstances or particular needs and the opinions and recommendations in this representation are not intended to represent recommendations of particular investments to particular investments to particular persons. Recipients should seek professional advice when deciding if an investment is appropriate. All securities transactions involve risks, which include (among others) the risk of adverse or unanticipated market, financial or political developments.

To the fullest extent permitted by law, Lucapa Diamond Company Limited, its officers, employees, agents and advisers do not make any representation or warranty, express or implied, as to the currency, accuracy, reliability or completeness of any information, statements, opinion, estimates, forecasts or other representations contained in this Presentation. No responsibility for any errors or omissions from this Presentation arising out of negligence or otherwise is accepted. This Presentation may include forward-looking statements. Forward-looking statements are only predictions and are subject to risks, uncertainties and assumptions which are outside the control of Lucapa Diamond Company Limited. Actual values, results or events may be materially different to those express or implied in this Presentation. Given these uncertainties, recipients are cautioned not to place reliance on forward-looking statements. Any forward-looking statements in this Presentation speak only at the date of issue of this Presentation. Subject to any continuing obligations under applicable law and ASX Listing Rules, Lucapa Diamond Company Limited does not undertake any obligation to update or revise any information or any of the forward-looking statements in this Presentation or any changes in events, conditions or circumstances on which any such forward-looking statement is based.

## No New Information

To the extent that this presentation contains references to prior exploration results which have been included in previous ASX market announcements made by the Company, unless explicitly stated, no new information is contained. The Company confirms that it is not aware of any new information or data that materially affects the information included in the prior relevant market announcements.

## Competent Person's Statement

Information included in this presentation that relates to exploration results and resource estimates is based on and fairly represents information and supporting documentation prepared and compiled by Richard Price MAusIMM who is a Member of the Australasian Institute of Mining and Metallurgy. Mr Price is an employee of Lucapa Diamond Company Limited. Mr Price has sufficient experience which is relevant to the style of mineralisation and type of deposit under consideration and to the activity which he is undertaking to qualify as a Competent Person as defined in the 2012 Edition of the Australasian Code for Reporting Exploration Results, Mineral Resources and Ore Reserves. Mr Price consents to the inclusion in the announcement of the matters based on this information in the form and context in which it appears.

Information included in this presentation that relates to the stone frequency, grade and size frequency valuation and validation in the Mothae resource estimate is based on and fairly represents information and supporting documentation prepared and compiled by Dr Friedrich Johannes Reichart, Pri.Sci.Nat and Dr Johannes Ferreira, Pri.Sci.Nat. Both are employees of the MSA Group (Pty) Ltd, Johannesburg, South Africa. Both hold qualifications and experience such that both qualify as members of a Recognised Overseas Professional Organisation (ROPO) under relevant ASX listing rules. Dr Reichard and Dr Ferreira have sufficient experience which is relevant to the style of mineralisation and type of deposit under consideration and to the activity which they are undertaking to qualify as a Competent Person as defined in the 2012 Edition of the Australasian Code for Reporting Exploration Results, Mineral Resources and Ore Reserves. Both Dr Reichardt and Dr Ferreira have consented in writing to the inclusion in the announcement of the matters based on this information in the form and context in which it appears.