

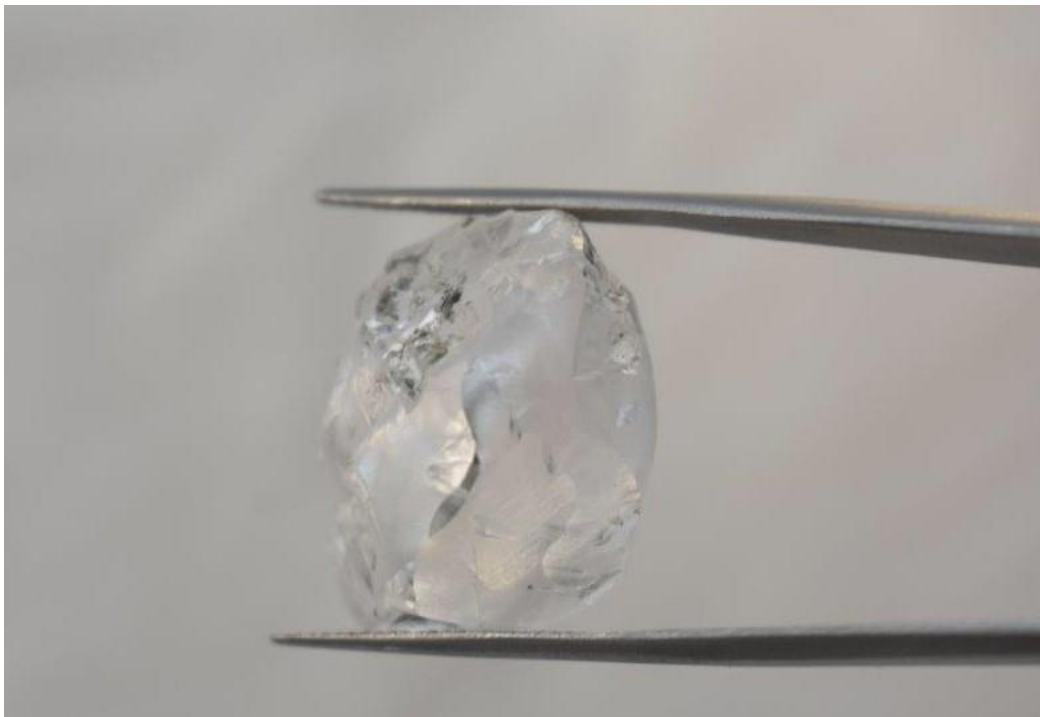


TOP-COLOUR 64 CARAT DIAMOND RECOVERED AT MOTHAE

- *Exceptional D-colour Type IIa gem is considered the best quality diamond recovered to date from the Mothae mine*
 - *64 carat diamond recovered from the higher-margin zones in southern pit, which have been accessed following dewatering*
-

Lucapa Diamond Company Limited (ASX: **LOM**) (“Lucapa” or “the Company”) and the Government of the Kingdom of Lesotho (“GoL”) are pleased to announce the recovery of an exceptional 64 carat diamond from the Mothae kimberlite mine in Lesotho (Lucapa 70%; GoL 30%).

Lucapa Managing Director Stephen Wetherall said the Type IIa D-colour gem is considered the best individual diamond recovered to date from the new Mothae mine, further underlining its status as a source of large and premium-value stones.



Exceptional 64 carat diamond recovered from the southern pit at Mothae (pre deep boiling)

“The recovery of this exceptional 64 carat gem also represents a great start to our mining campaign in the higher margin zones in the southern pit at Mothae,” said Mr Wetherall.

In line with recent guidance, the commencement of dewatering of the southern pit into the main 500,000m³ water dam currently under construction at Mothae has enabled mining to transition to this higher-margin zone of the kimberlite pipe in Q3 2019. Mining is scheduled to continue in the southern pit throughout 2019.

For and on behalf of the Lucapa Board.

STEPHEN WETHERALL
MANAGING DIRECTOR

ABOUT LUCAPA

Lucapa is a growing diamond company with high-value mines in Angola and Lesotho. Lucapa's vision is to become a leading global producer of large and premium-quality diamonds from alluvial and kimberlite sources.

Lulo and Mothae produce large and high-value diamonds, with >75% of revenues from both mines generated from the recovery of +4.8 carat stones.

Lulo has produced 13 +100 carat diamonds to date and is the highest average US\$ per carat alluvial diamond production in the world. Lucapa and its Lulo partners continue to advance their search for the primary kimberlite sources of these exceptional alluvial gems through a systematic exploration program.

The new 1.1 Mtpa Mothae kimberlite mine in diamond-rich Lesotho commenced commercial diamond mining operations in January 2019 and has already recovered seven +50 carat diamonds under Lucapa's ownership.

Lucapa's Board and management team have decades of diamond industry experience across the globe with companies including De Beers and Gem Diamonds.